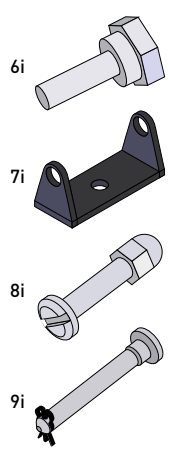


Fitting instructions for Electric Operation



Contents

1. Plug-in Transformer or Transformer Switch
2. Motor Cable
3. 24v Remote Control Motor or Standard Motor
4. Motor Mounting Bracket
5. 25mm Screws
6. Shoulder Bolts (see 6i)
7. Vent Flap Attachment Bracket (see 7i)
8. 16mm Vent Flap Bolt and Dome Head Nut (see 8i)
9. Connector Bar and Cotter Clip (see 9i)
10. Rain Sensor*
11. Wall Mounted Switch*
12. Remote Control Handset*



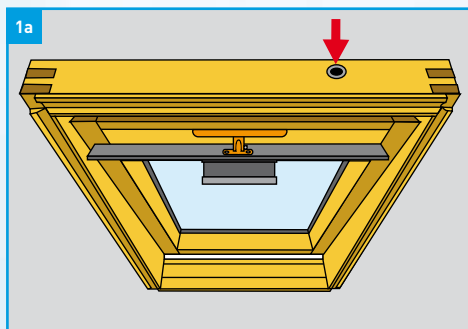
*NOTE: Items are 'optional' depending on type of Keylite Electric Operation kit selected.

Safety Precautions:

Please ensure the following precautions are taken when using any of the products:

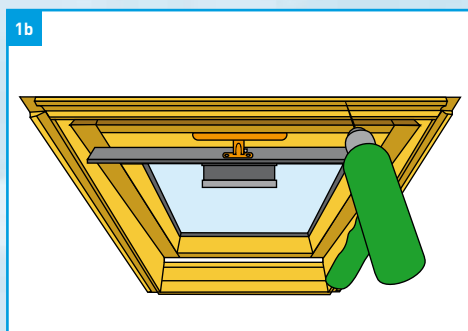
1. Disconnect the main electrical supply before carrying-out any work.
2. Ensure no forces act on the switch terminals after installation.
3. **NB. There is a danger to life and risk of injury with electrically operated windows!**
The window motor stops by an electronic 'limit stop' or 'overload cut-off'. The resulting forces are strong enough to crush body parts. Please attach the safety sticker to be clearly visible on the frame of the roof window. Please ensure that occupants are aware that the window can be closed automatically or by a remote switch.
4. We recommend only a suitably qualified electrician should install and connect all electrical devices.

Installation Procedures:

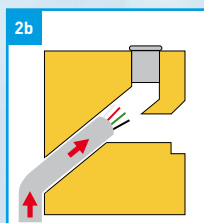
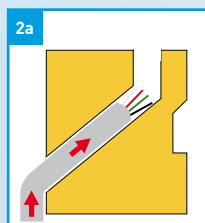
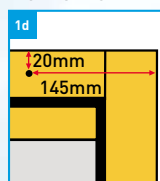
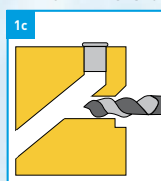


If the interior ceiling is not finished, the cable can be passed through the pre-drilled hole by removing the thimble (fig 1a).

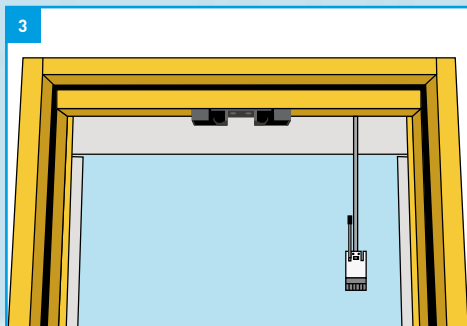
Please note: All Installation Procedures are viewed from inside the room.



If the ceiling is finished a 10mm hole must be drilled through the top of the frame (figs 1b, 1c & 1d), 20mm down from top and 145mm in from the side of the frame.



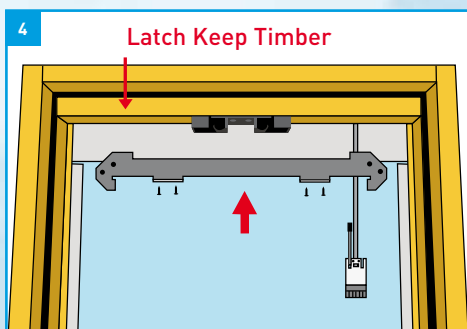
Feed the cable up through the hole (fig. 2a or 2b).



Please make sure there is approximately 500mm of cable remaining in the room (fig 3).

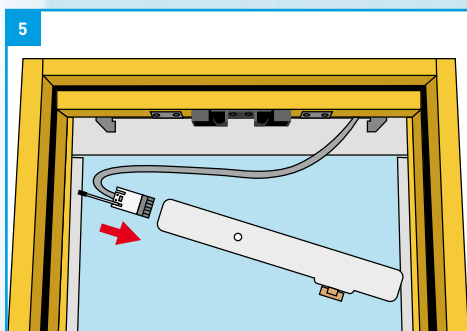
NB. If your kit contains a rain sensor it should be connected and fitted at this stage. (Please follow rain sensor instructions [A](#) overleaf.)

Now ensure all components are correctly wired up as per wiring diagram supplied with your kit.



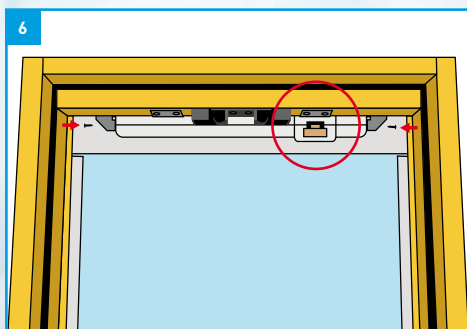
NB. If your kit contains a wall mounted switch it should be connected and fitted at this stage. (Please follow wiring diagram supplied with your kit.)

Attach the motor mounting bracket to the latch keep timber using 4 No. 25mm screws (fig 4). Centre the bracket on either side of the latch keep.

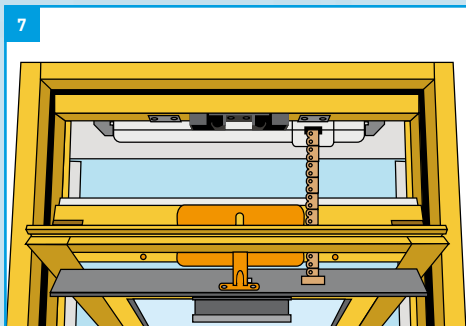


Plug the cable into the motor, ensuring that it is fully connected (fig 5).

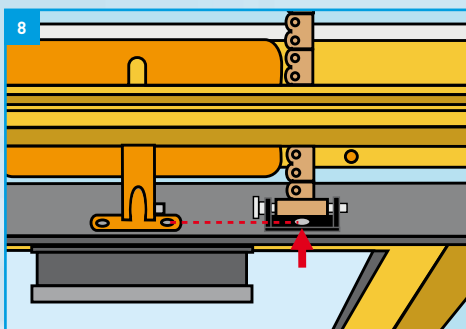
NB. If your kit contains a remote control it should be programmed at this stage. (Please follow programming instructions [B](#) overleaf.)



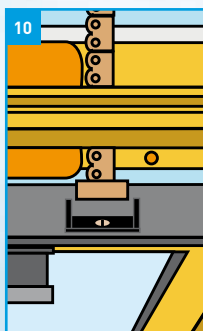
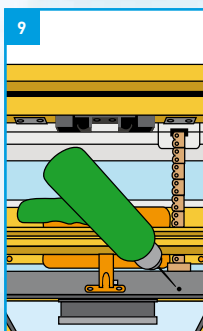
Fix the motor using 2 No. shoulder bolts. Ensure that the chain connector is facing inwards to the right of the latch keep (circled in fig 6). Once the motor is securely in position, feed the excess cable back up through the top of the frame.



In order to attach the sash to the motor, fully extend the chain connector by pressing the down-arrow button on the wall mounted switch (fig 7). If you have opted not to fit a wall mounted switch you will then have to activate it using your remote control.

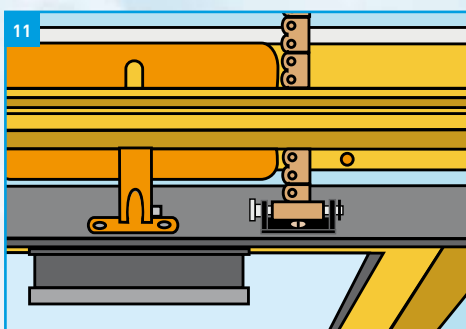


Once the chain is fully extended, use the connector bar to attach the chain to the vent flap bracket. Ensuring that you keep the chain straight, line up the vent flap bracket as shown (fig 8) and mark.



Drill a 5mm hole through the vent flap (fig 9).

Attach the vent flap bracket using 1 No. 16mm bolt and dome head nut (fig 10).

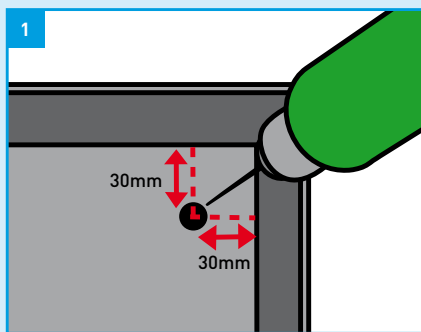


Feed the connector bar through the vent flap bracket and the chain connector. Secure with the cotter pin (fig 11).

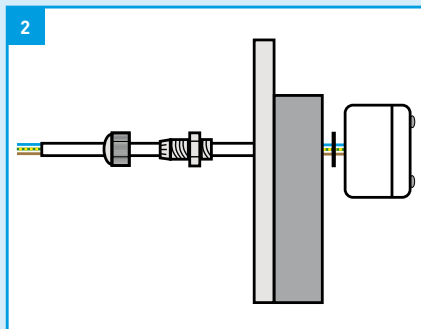
A Rain Sensor

Please note that the connections inside the rain sensor have already been completed so the sensor does not need to be opened.

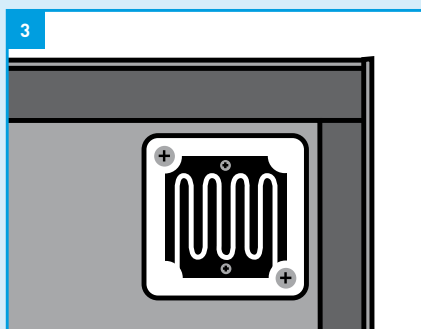
1. Drill a 12mm hole in the hood (fig 1).



2. Remove the plastic nut and the plastic cable feed from the back of the rain sensor. Feed the rain sensor cable through the hole and replace the plastic cable feed and the plastic nut on the underside of the hood, ensuring the rubber washer is on the outside of the hood (Fig 2).

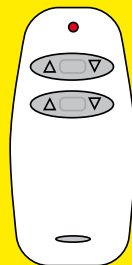


3. Connect the rain sensor cable as per wiring diagrams (Fig 3).



B Remote Control Transmitter

There are various adjustment levels available using the RCR 10-2 Transmitter. Please note that the broadcasting frequency range is 868.3MHz. The transmitting code is changed with every switch depression, thus providing security and peace of mind.



To program the transmitter and motors:

1. Press the white circular button on the motor for 10 seconds. Once a 'buzz' is heard, release the button.
2. Press the 'UP' arrow of the transmitter's upper switch. A further 'buzz' shall be heard as a confirmation.
3. The upper switch will now be operational to open and close the window, using the 'UP' and 'DOWN' arrows.

The window can be stopped at any point by pressing the same arrow button again during opening or closing.

If you require the lower switch to operate the motor, press the lower switch whilst also pressing the white motor button for 10 seconds.

Dead Man's Function:

The system is set with a 'Dead Man's' function, whereby the window will only close as long as you are holding the 'DOWN' arrow.

To remove this safety feature:

1. Repeat the previous operation of pressing the white circular button on the motor BUT continue to hold the button AFTER the first 'buzz'. Release the button after a subsequent DOUBLE 'buzz' is heard.
2. A further SINGLE 'buzz' will then be heard as a confirmation of this action.
3. The motor will then close fully upon a single press of the 'DOWN' arrow.

To re-connect the Dead Man's function, repeat the procedure above. A confirmation DOUBLE 'buzz' will then be heard instead.

10 Minutes Ventilation:

The removal of the Dead Man's function also then provides a separate function called '10 Minutes Ventilation'. By pressing the centre rectangle between the 'UP' and 'DOWN' arrows, the motor shall open the window fully for a timed 10 minute period. The window shall then close after the 10 minute period. This function can be overridden at any time using the arrows.

Re-programming:

The motor can be re-programmed by deleting the memory functions.

1. Repeat the previous operation of pressing the white circular button on the motor BUT continue to press the button AFTER the first 'buzz'. Continue to press the button after the DOUBLE 'buzz' is heard and release after the TRIPLE 'buzz' is heard.
2. A further SINGLE 'buzz' will then be heard as a confirmation of this action.
3. The motor memory is now deleted and re-programming can take place.

Derryloran Industrial Estate,
Sandholes Road, Cookstown
Co.Tyrone BT80 9LU

Tel: 028 8675 8921
Fax: 028 8675 8923
E-mail: info@keylite.co.uk

Ryder Close, Cadley Hill Ind. Est.,
Swadlincote, South Derbyshire
DE11 9EU

Tel: 01283 200150
Fax: 01283 223352
E-mail: info@keylite.co.uk